



60 Willowmead  
Hertford, SG14 2AT

Price Guide £410,000





## 60 Willowmead

Hertford, SG14 2AT

**SOLD BY SHEPHERDS - OFFERED CHAIN FREE!** A tastefully and well presented two bedroom end terrace house situated in this highly desirable development on the west side of town within easy access to the A414 and walking distance to Hertford North train station and the town centre. This fully double glazed and gas centrally heated home offers accommodation to include a spacious 21' living room, refitted contemporary style gloss white kitchen and refitted bathroom. With the additional benefit of an attractively landscaped sunny aspect south west facing garden to rear and a garage en-bloc located near by.





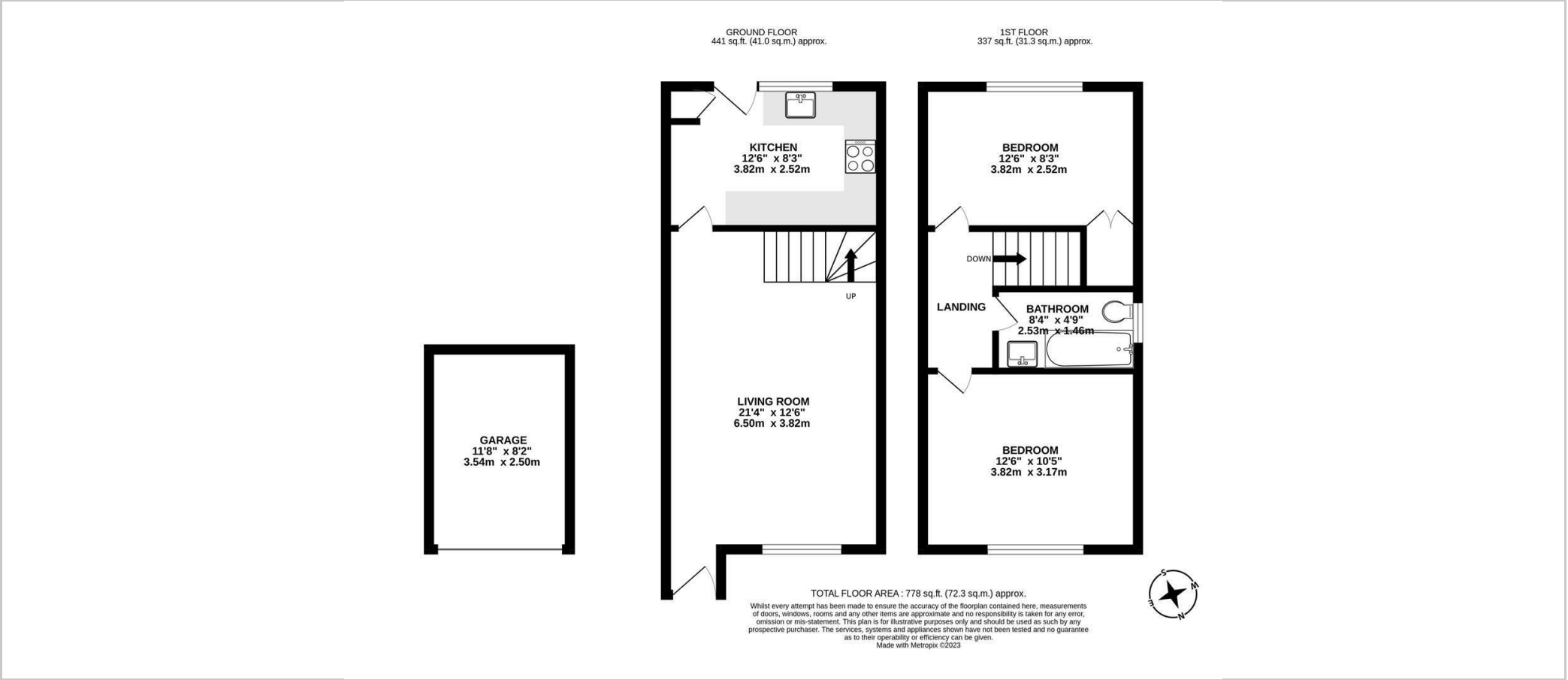


- Two double bedroom end terrace
- Walking distance to Hertford North station and town centre
- Refitted kitchen and bathroom
- Garage en-bloc
- Attractively landscaped south facing garden to rear
- CHAIN FREE





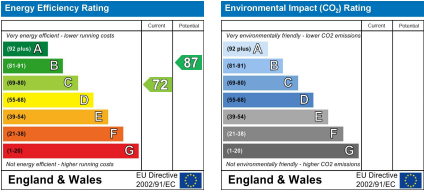
Floor Plan



Viewing

Please contact Shepherds of Hertford on 01992 551955 if you wish to arrange a viewing appointment for this property or require further information.

Energy Performance Graph



These particulars, whilst believed to be accurate are set out as a general outline only for guidance and do not constitute any part of an offer or contract. Intending purchasers should not rely on them as statements of representation of fact, but must satisfy themselves by inspection or otherwise as to their accuracy. No person in this firms employment has the authority to make or give any representation or warranty in respect of the property.

Riverside House, 6 Millbridge, Hertford, SG14 1PY  
Tel: 01992 551955 Email: enquiries@shepherdsofhertford.co.uk